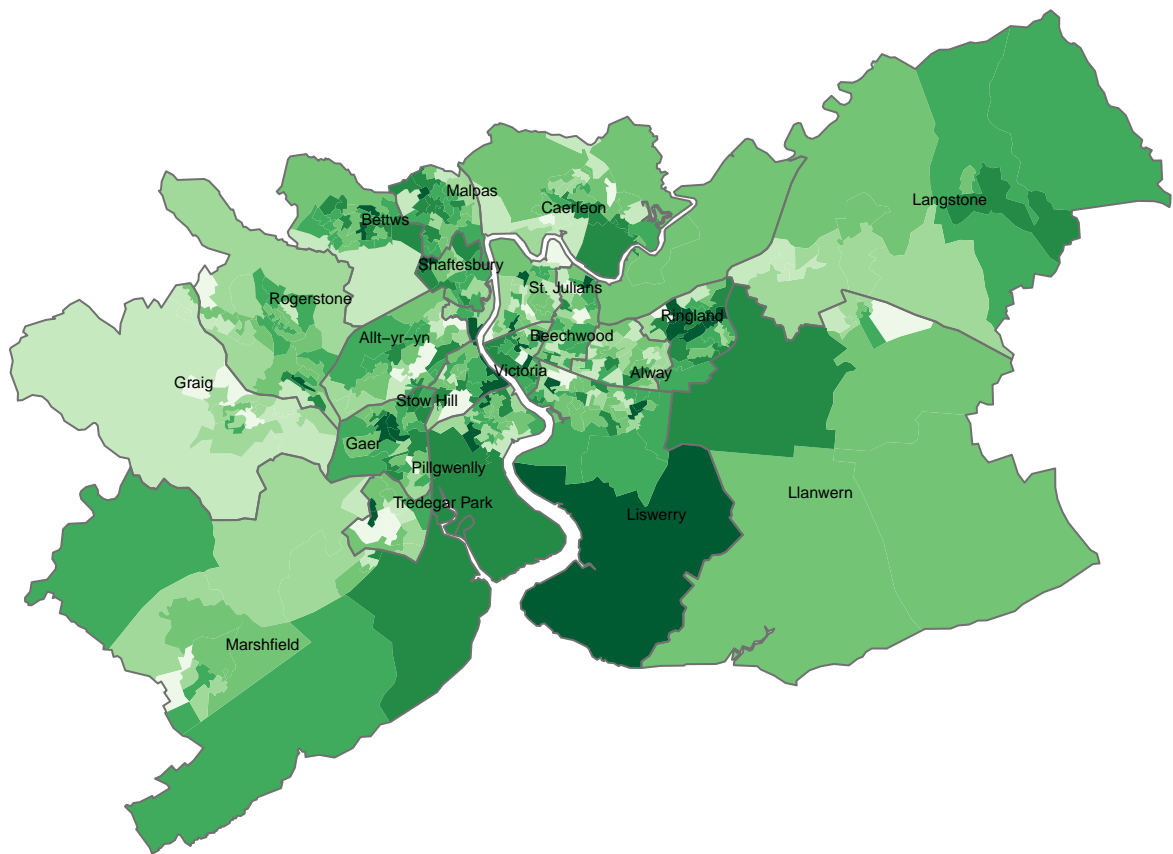


Newport

Table: Welsh language skills
KS207WA0009 (No skills in Welsh)



%, 2011 Census

- under 81
- 81 to 84
- 84 to 86
- 86 to 88
- 88 to 90
- 90 to 92
- over 92

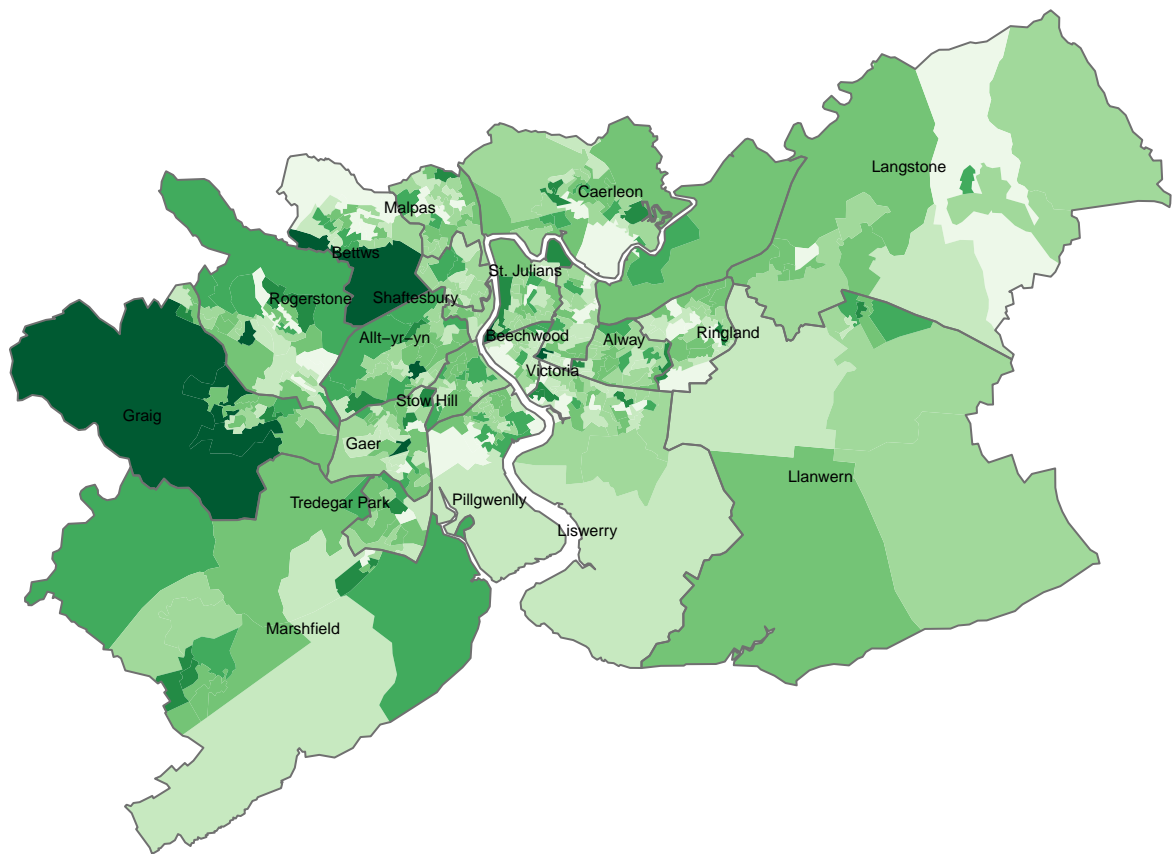
The maps show percentages within Census 2011 output areas, within electoral divisions

Map created by Hywel Jones. Variables KS208WA0022-27 corrected

Contains National Statistics data © Crown copyright and database right 2013; Contains Ordnance Survey data © Crown copyright and database right 2013

Newport

Table: Welsh language skills
KS207WA0010 (Can understand spoken Welsh only)



%, 2011 Census

- under 1
- 1 to 2
- 2 to 2
- 2 to 3
- 3 to 4
- 4 to 5
- over 5

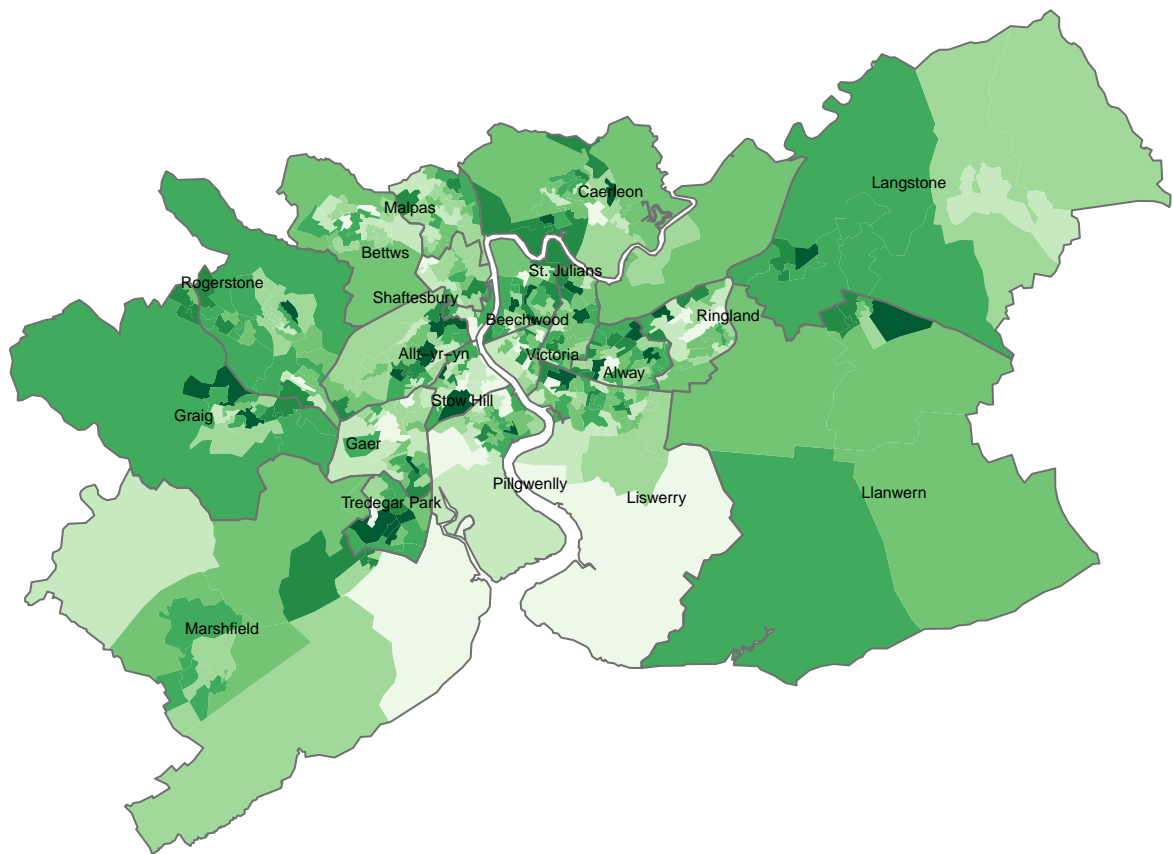
The maps show percentages within Census 2011 output areas, within electoral divisions

Map created by Hywel Jones. Variables KS208WA0022-27 corrected

Contains National Statistics data © Crown copyright and database right 2013; Contains Ordnance Survey data © Crown copyright and database right 2013

Newport

Table: Welsh language skills
KS207WA0011 (Can speak Welsh)



%, 2011 Census

- under 5
- 5 to 7
- 7 to 8
- 8 to 10
- 10 to 12
- 12 to 14
- over 14

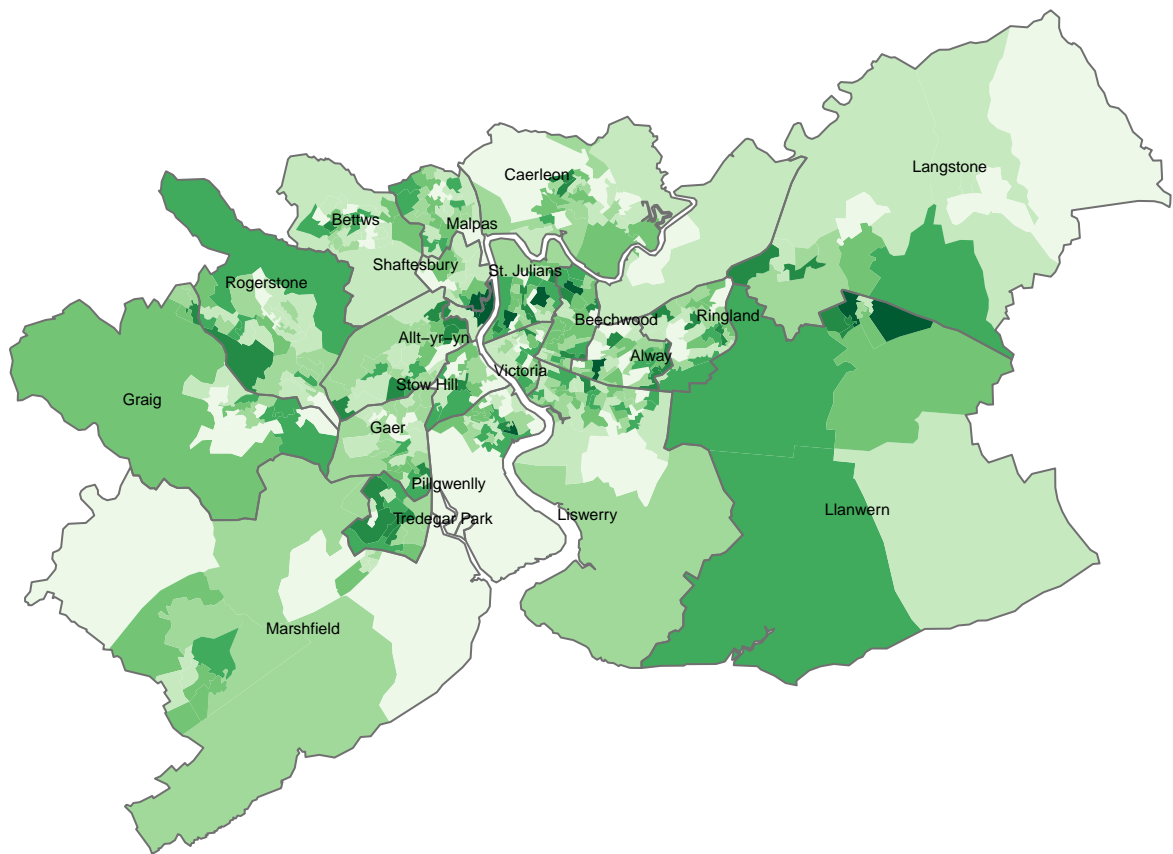
The maps show percentages within Census 2011 output areas, within electoral divisions

Map created by Hywel Jones. Variables KS208WA0022-27 corrected

Contains National Statistics data © Crown copyright and database right 2013; Contains Ordnance Survey data © Crown copyright and database right 2013

Newport

Table: Welsh language skills
KS207WA0012 (Can speak but cannot read or write Welsh)



%, 2011 Census

- under 1
- 1 to 1
- 1 to 2
- 2 to 2
- 2 to 3
- 3 to 4
- over 4

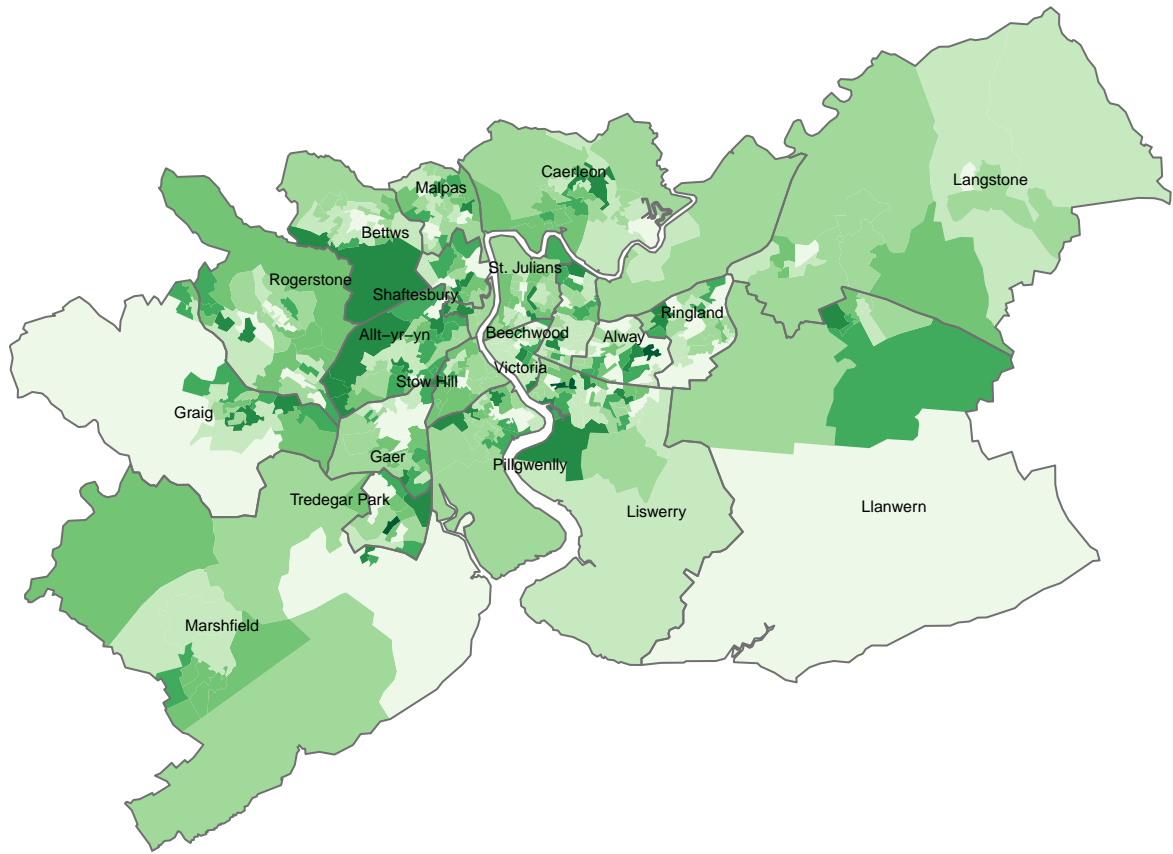
The maps show percentages within Census 2011 output areas, within electoral divisions

Map created by Hywel Jones. Variables KS208WA0022-27 corrected

Contains National Statistics data © Crown copyright and database right 2013; Contains Ordnance Survey data © Crown copyright and database right 2013

Newport

Table: Welsh language skills
KS207WA0013 (Can speak and read but cannot write Welsh)



%, 2011 Census

- under 0
- 0 to 1
- 1 to 1
- 1 to 1
- 1 to 1
- 1 to 2
- over 2

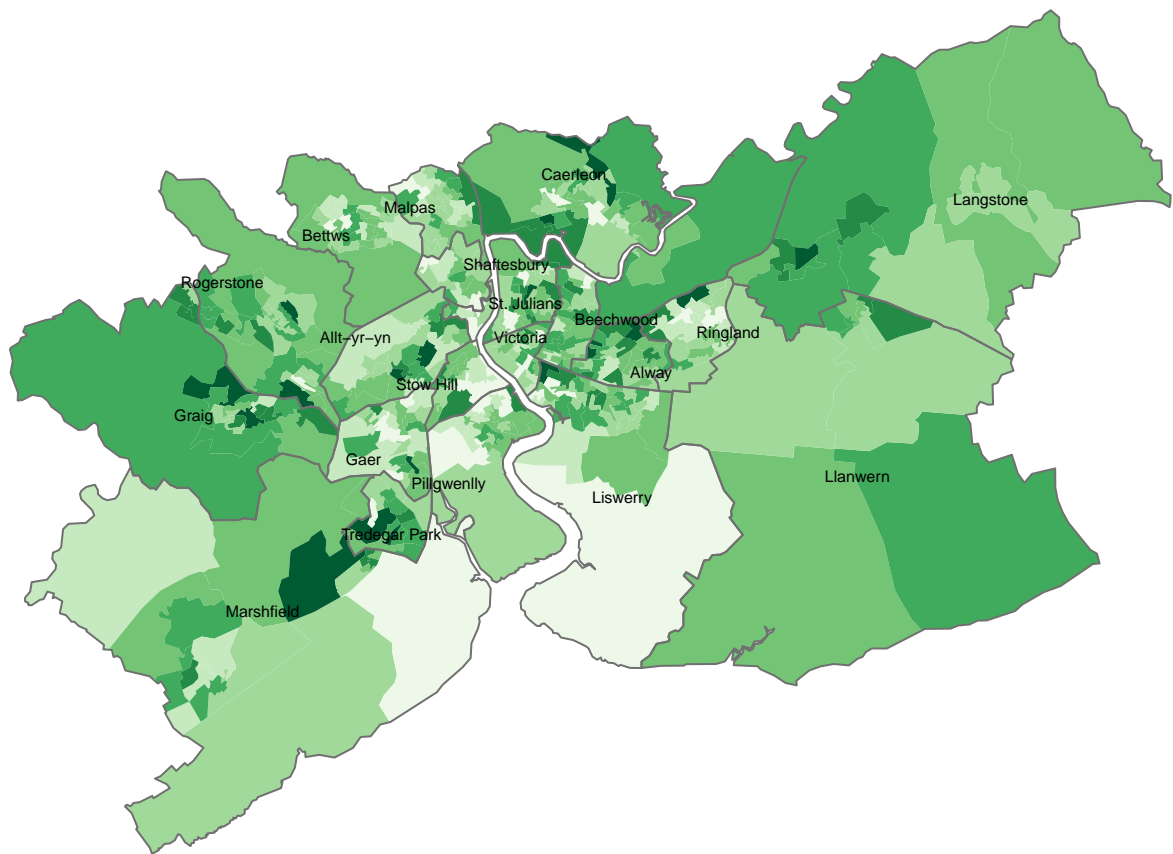
The maps show percentages within Census 2011 output areas, within electoral divisions

Map created by Hywel Jones. Variables KS208WA0022-27 corrected

Contains National Statistics data © Crown copyright and database right 2013; Contains Ordnance Survey data © Crown copyright and database right 2013

Newport

Table: Welsh language skills
KS207WA0014 (Can speak, read and write Welsh)



%, 2011 Census

- under 3
- 3 to 5
- 5 to 6
- 6 to 7
- 7 to 9
- 9 to 11
- over 11

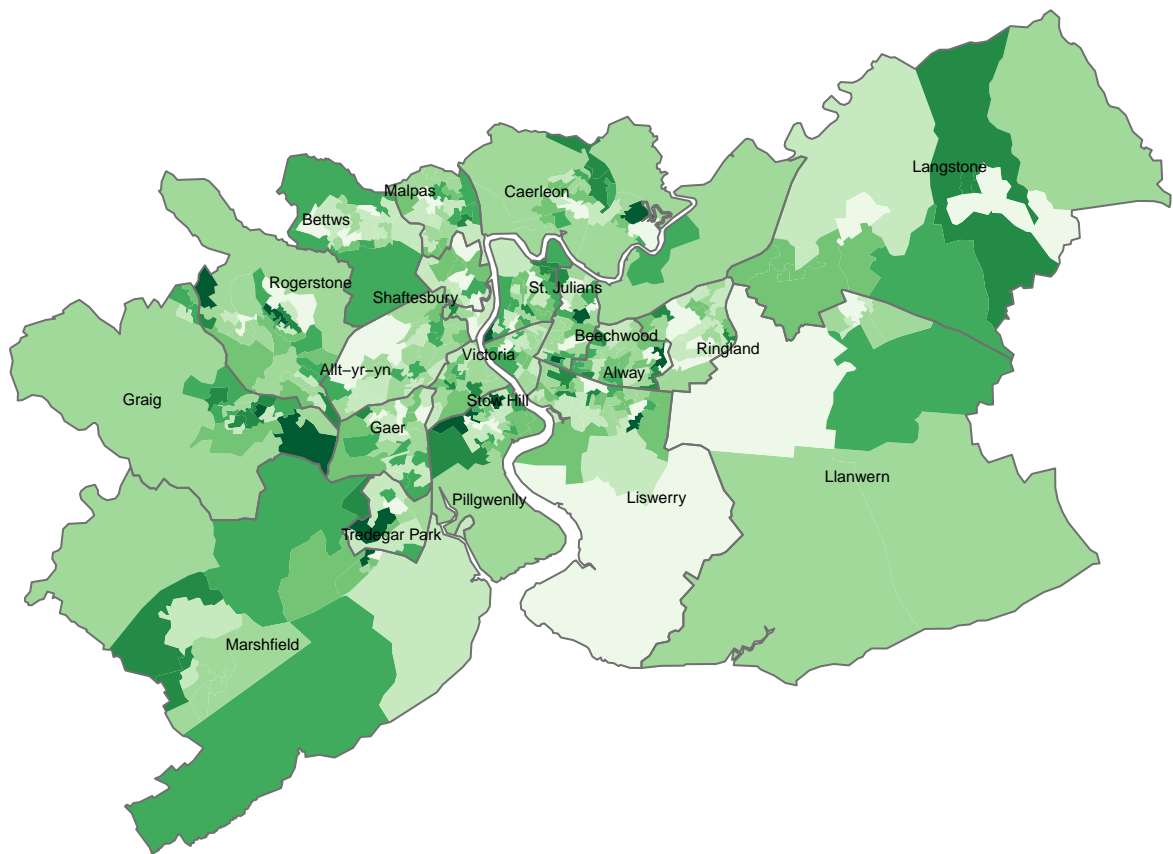
The maps show percentages within Census 2011 output areas, within electoral divisions

Map created by Hywel Jones. Variables KS208WA0022-27 corrected

Contains National Statistics data © Crown copyright and database right 2013; Contains Ordnance Survey data © Crown copyright and database right 2013

Newport

Table: Welsh language skills
KS207WA0015 (Other combination of skills in Welsh)



%, 2011 Census

- under 1
- 1 to 1
- 1 to 2
- 2 to 3
- 3 to 3
- 3 to 4
- over 4

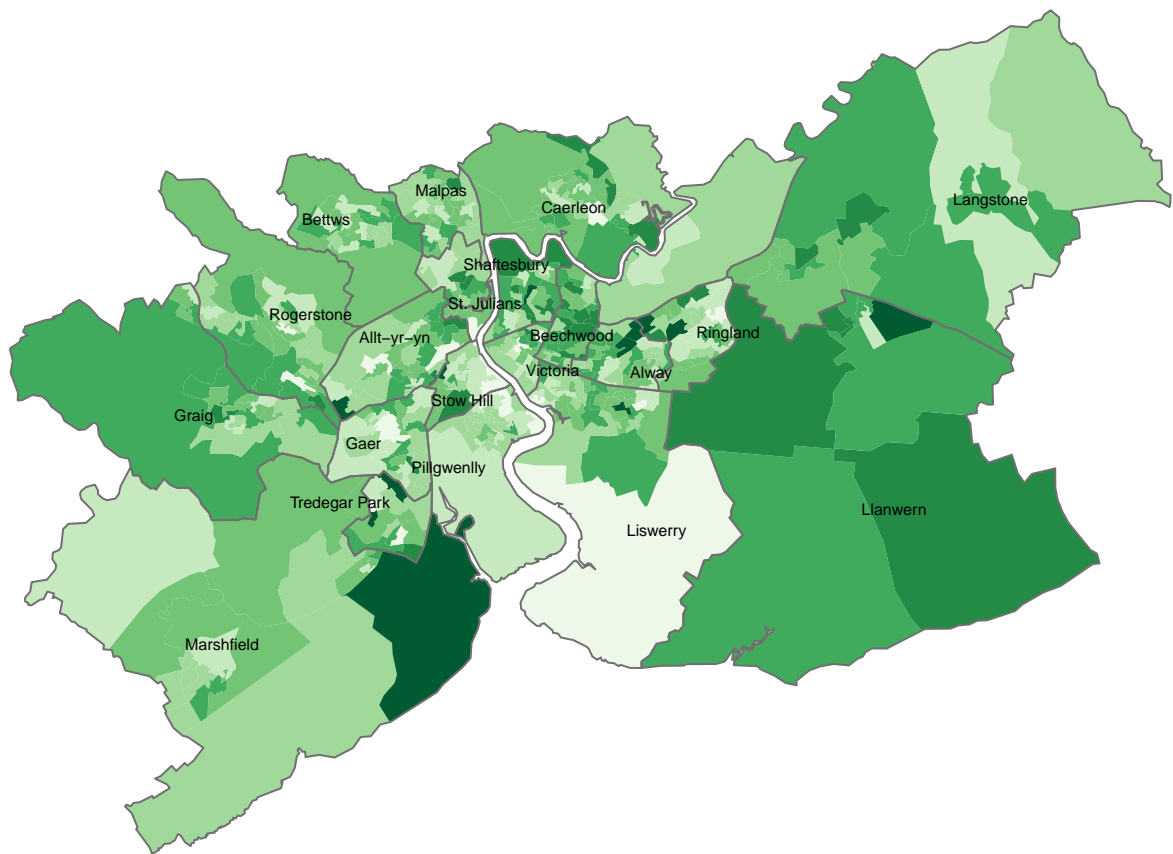
The maps show percentages within Census 2011 output areas, within electoral divisions

Map created by Hywel Jones. Variables KS208WA0022-27 corrected

Contains National Statistics data © Crown copyright and database right 2013; Contains Ordnance Survey data © Crown copyright and database right 2013

Newport

Table: Welsh language profile
KS208WA0022 (Can speak Welsh: Age 3 to 15)



%, 2011 Census

- under 17
- 17 to 26
- 26 to 34
- 34 to 40
- 40 to 49
- 49 to 62
- over 62

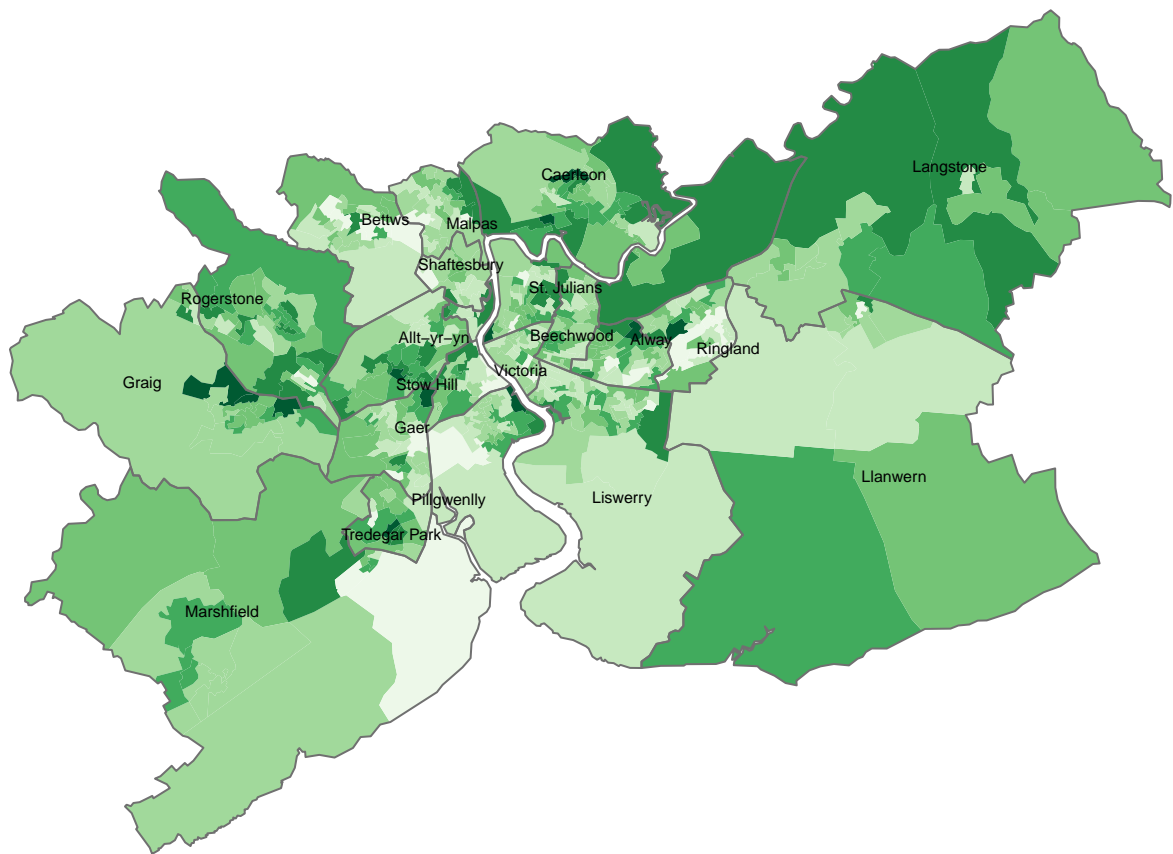
The maps show percentages within Census 2011 output areas, within electoral divisions

Map created by Hywel Jones. Variables KS208WA0022-27 corrected

Contains National Statistics data © Crown copyright and database right 2013; Contains Ordnance Survey data © Crown copyright and database right 2013

Newport

Table: Welsh language profile
KS208WA0023 (Can speak Welsh: Age 16 to 64)



%, 2011 Census

- under 2
- 2 to 3
- 3 to 5
- 5 to 6
- 6 to 7
- 7 to 9
- over 9

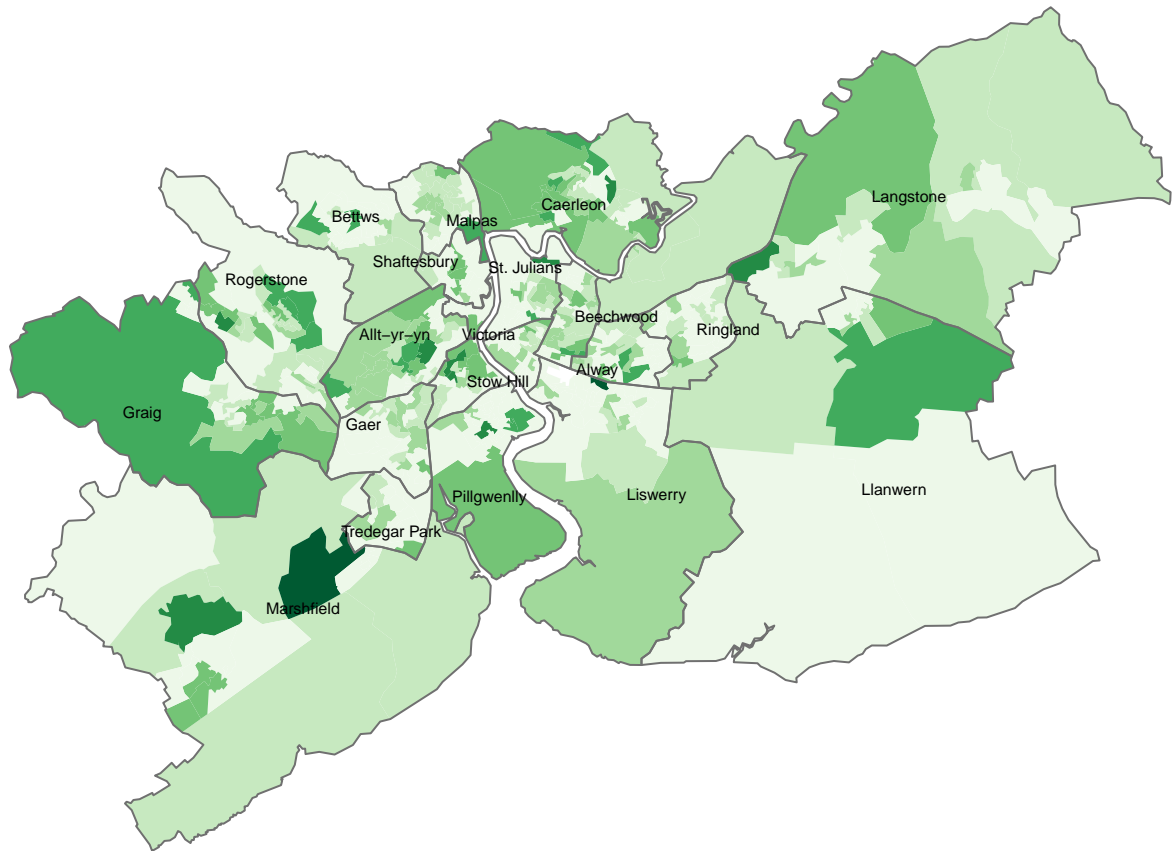
The maps show percentages within Census 2011 output areas, within electoral divisions

Map created by Hywel Jones. Variables KS208WA0022-27 corrected

Contains National Statistics data © Crown copyright and database right 2013; Contains Ordnance Survey data © Crown copyright and database right 2013

Newport

Table: Welsh language profile
KS208WA0024 (Can speak Welsh: Age 65 and over)



%, 2011 Census

- under 1
- 1 to 2
- 2 to 4
- 4 to 5
- 5 to 7
- 7 to 12
- over 12

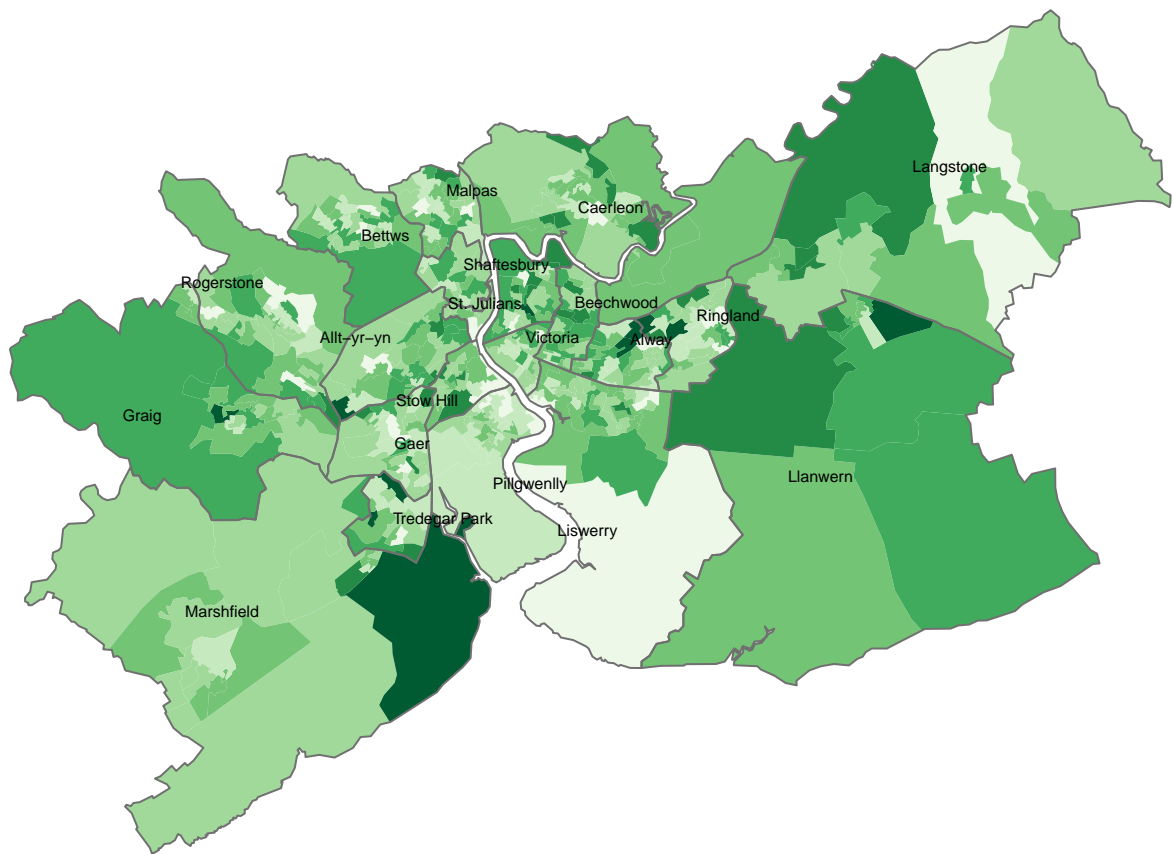
The maps show percentages within Census 2011 output areas, within electoral divisions

Map created by Hywel Jones. Variables KS208WA0022-27 corrected

Contains National Statistics data © Crown copyright and database right 2013; Contains Ordnance Survey data © Crown copyright and database right 2013

Newport

Table: Welsh language profile
KS208WA0025 (One or more skills in Welsh: Age 3 to 15)



%, 2011 Census

- under 27
- 27 to 36
- 36 to 44
- 44 to 50
- 50 to 58
- 58 to 70
- over 70

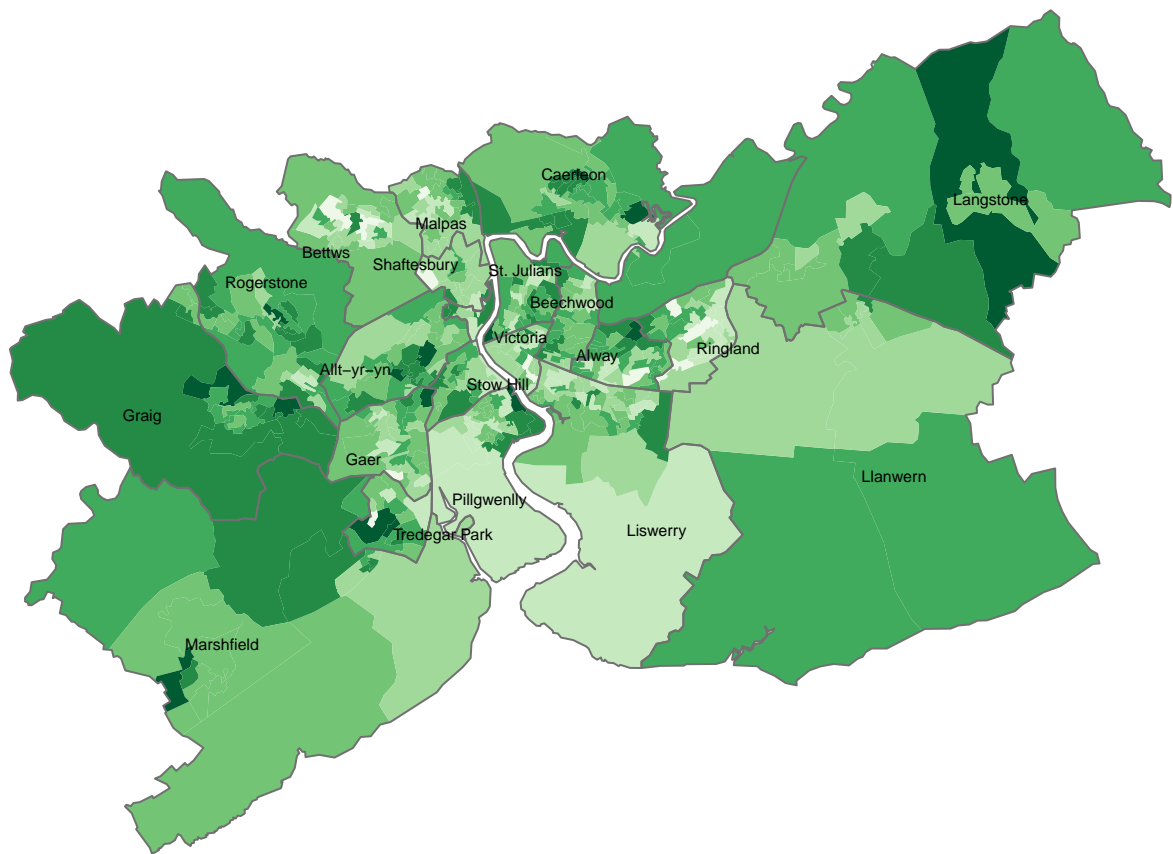
The maps show percentages within Census 2011 output areas, within electoral divisions

Map created by Hywel Jones. Variables KS208WA0022-27 corrected

Contains National Statistics data © Crown copyright and database right 2013; Contains Ordnance Survey data © Crown copyright and database right 2013

Newport

Table: Welsh language profile
KS208WA0026 (One or more skills in Welsh: Age 16 to 64)



%, 2011 Census

- under 3
- 3 to 5
- 5 to 7
- 7 to 8
- 8 to 10
- 10 to 13
- over 13

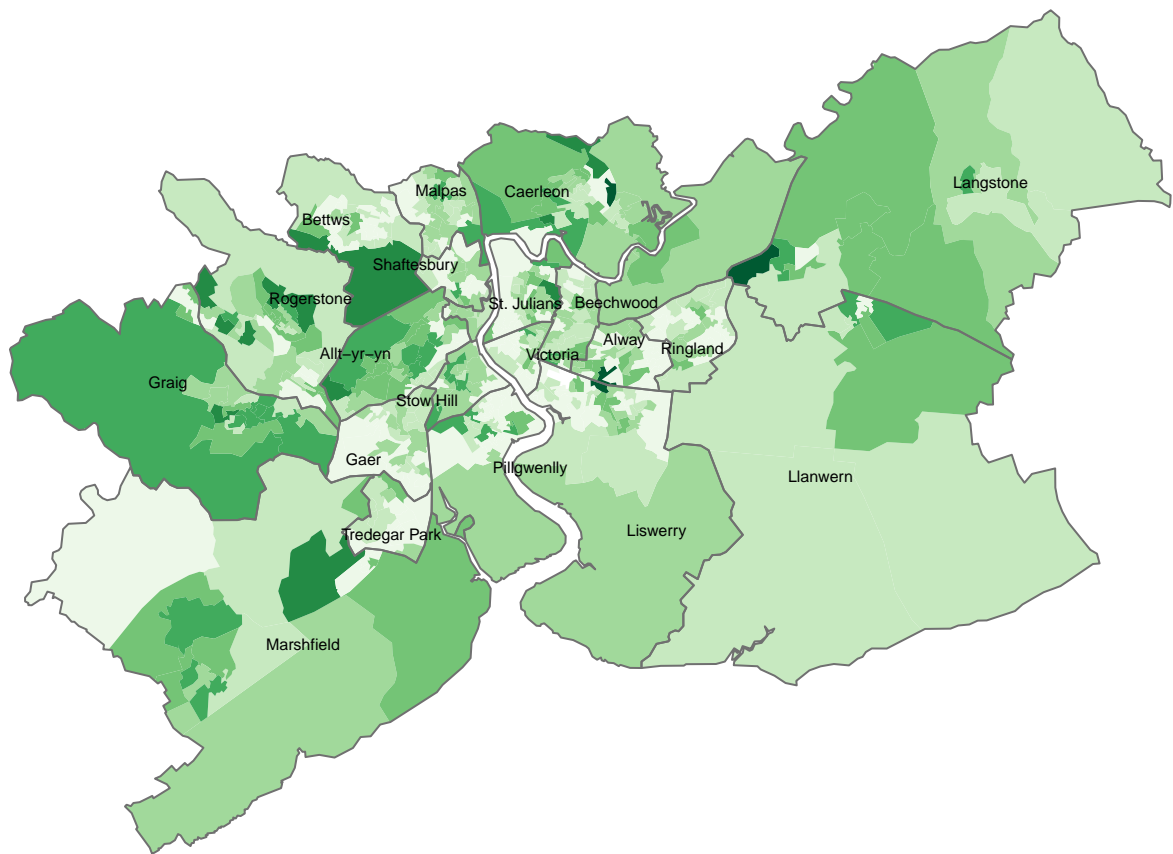
The maps show percentages within Census 2011 output areas, within electoral divisions

Map created by Hywel Jones. Variables KS208WA0022-27 corrected

Contains National Statistics data © Crown copyright and database right 2013; Contains Ordnance Survey data © Crown copyright and database right 2013

Newport

Table: Welsh language profile
KS208WA0027 (One or more skills in Welsh: Age 65 and over)



%, 2011 Census

- under 1
- 1 to 3
- 3 to 6
- 6 to 8
- 8 to 11
- 11 to 16
- over 16

The maps show percentages within Census 2011 output areas, within electoral divisions

Map created by Hywel Jones. Variables KS208WA0022-27 corrected

Contains National Statistics data © Crown copyright and database right 2013; Contains Ordnance Survey data © Crown copyright and database right 2013